

# USACE: EMERGENCY MANAGEMENT

Brian K. Pirtle/ Jennifer Moehlmann/ John Osterhage

St. Louis District



US Army Corps of Engineers®



# USACE DIVISIONS AND DISTRICTS

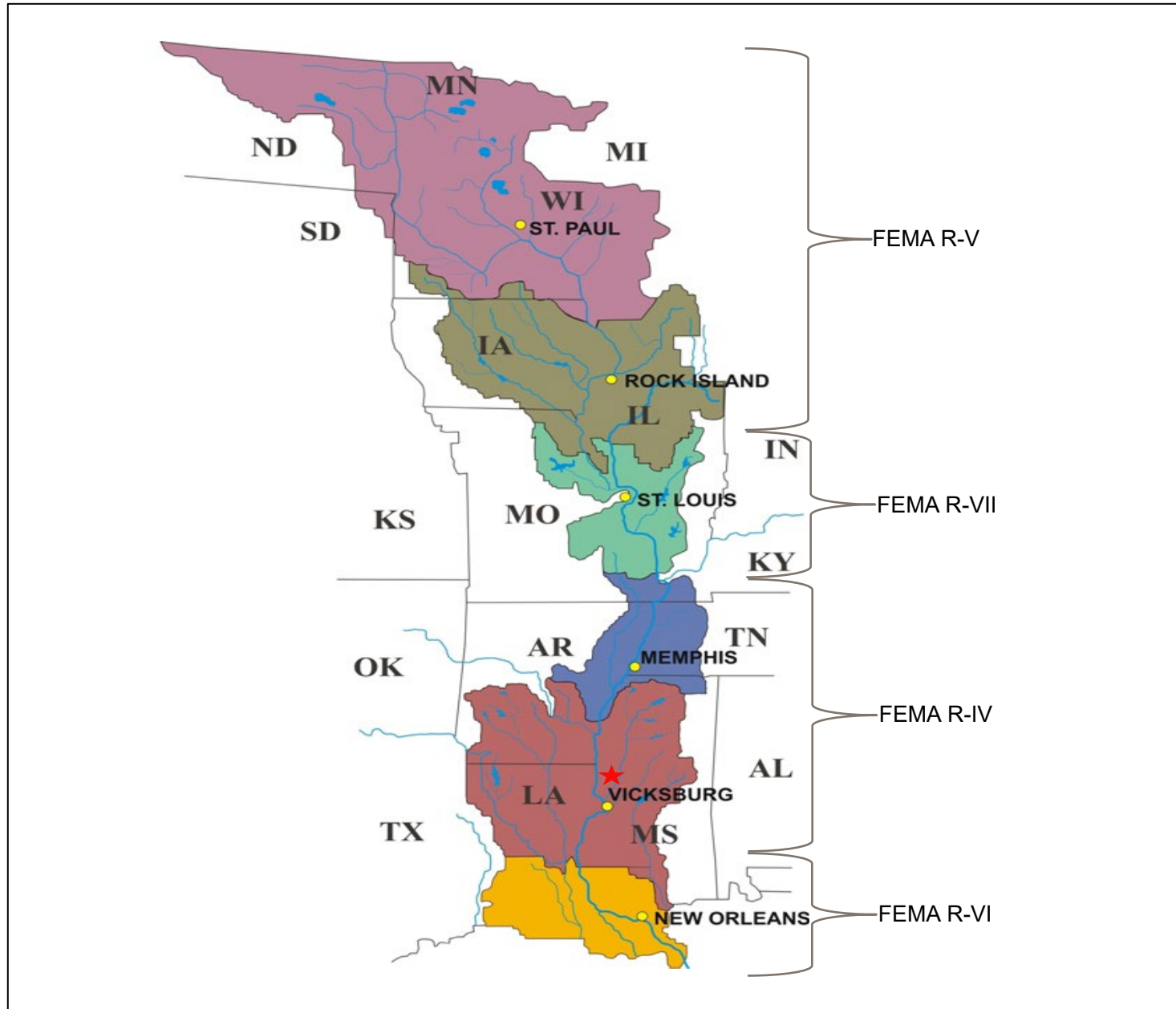


## Footprint Includes:

- 8 Divisions/ 46 Districts
- HQs Based in Washington D.C.
- Commanded by Lieutenant General William H. (Butch) Graham



# MISSISSIPPI VALLEY DIVISION (MVD)

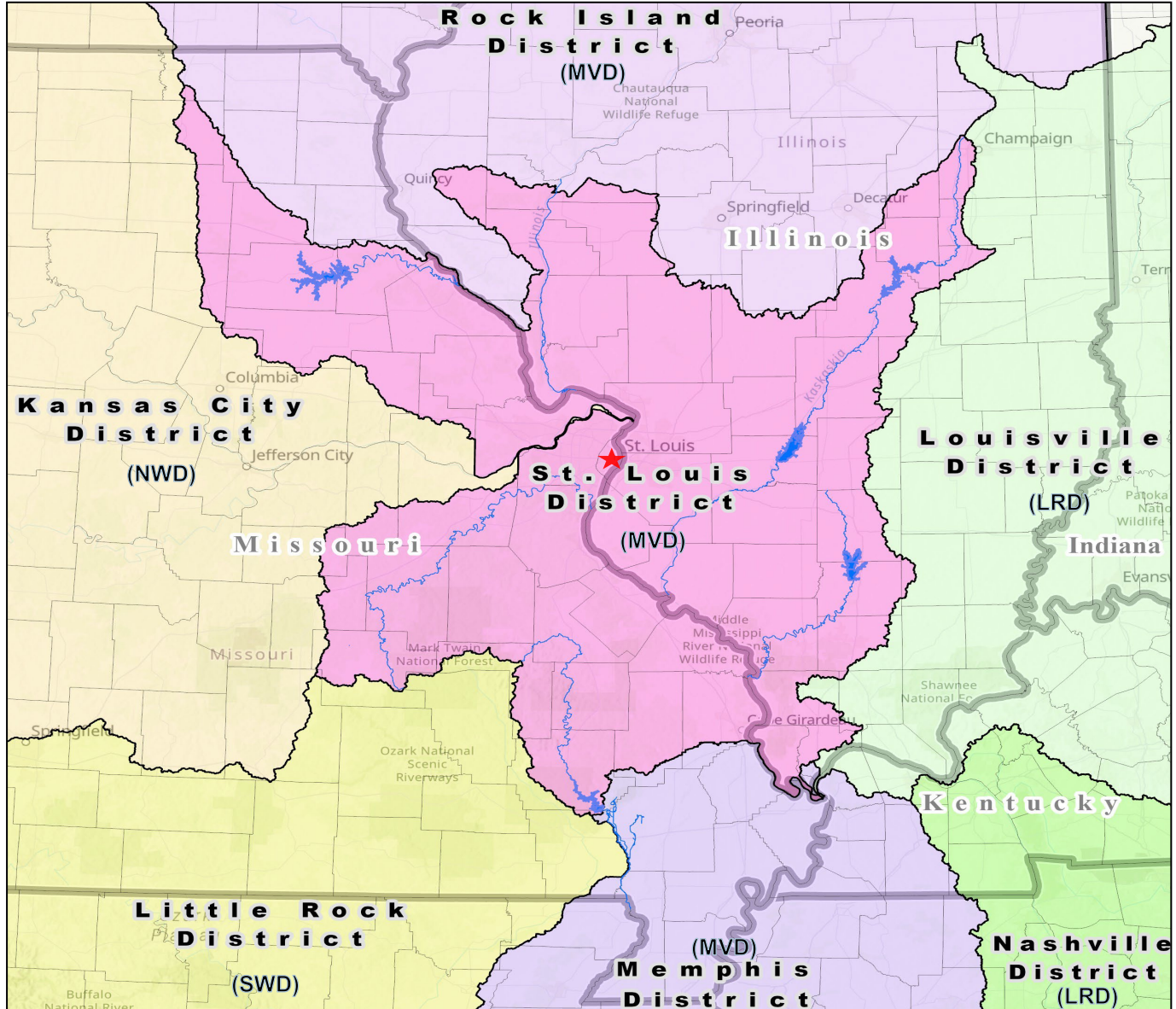


## Footprint Includes:

- ● Six Districts
- ★ Division Based in Vicksburg, MS
- Spread Across Four FEMA Regions
- Commanded by Major General Kimberly A. Peeples



# ST. LOUIS DISTRICT



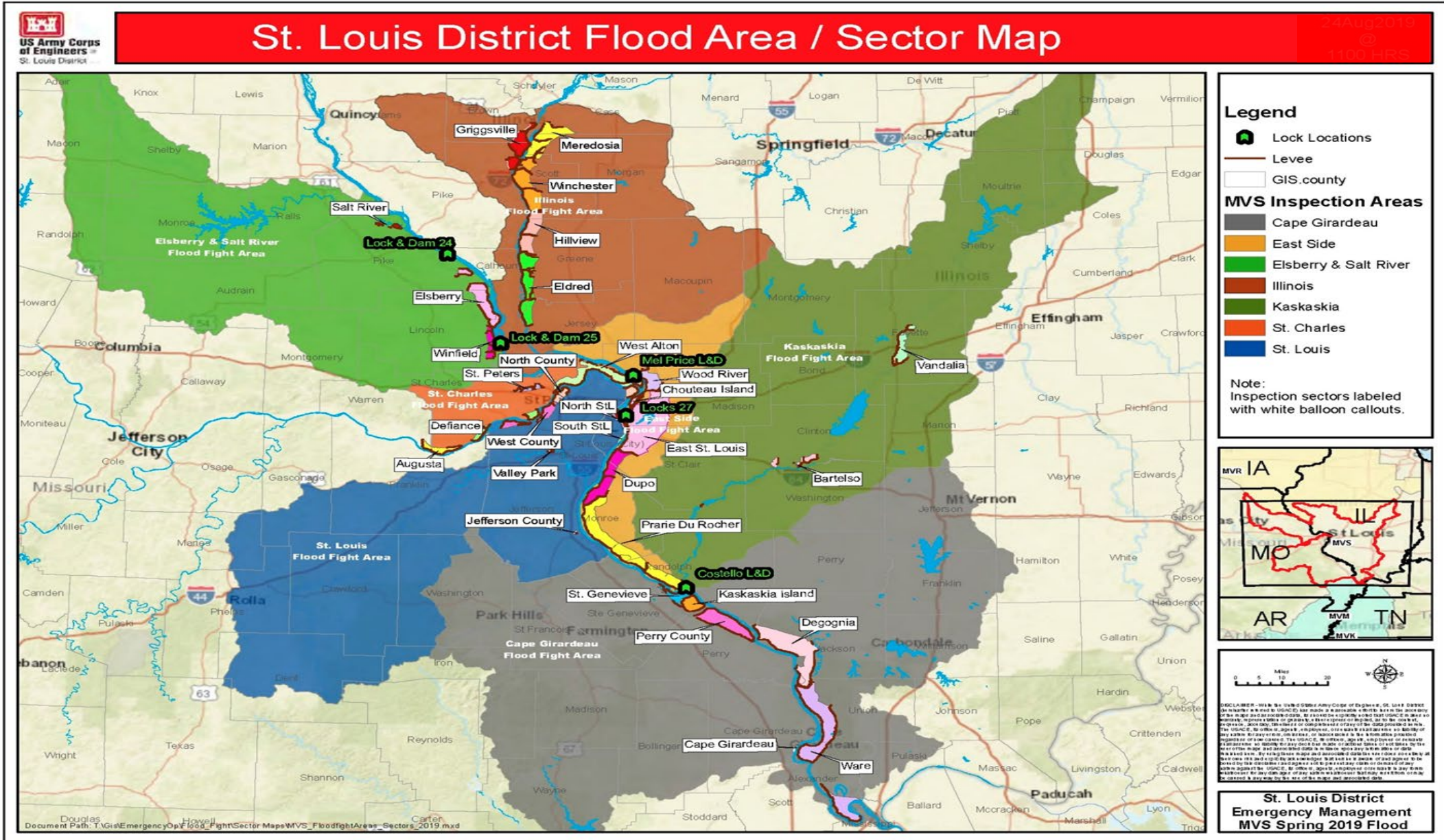
## Footprint Includes:

- ★ District Based in St. Louis, MO
- Expands Across 28,000 Square Miles (significant portion in Missouri and Illinois)
- Neighboring USACE Divisions
  - (West) Northwest Division (NWD)
  - (East) Lakes & Rivers Division (LRD)
  - (Southwest) Southwest Division (SWD)
- Commanded by COL Andy J. Pannier



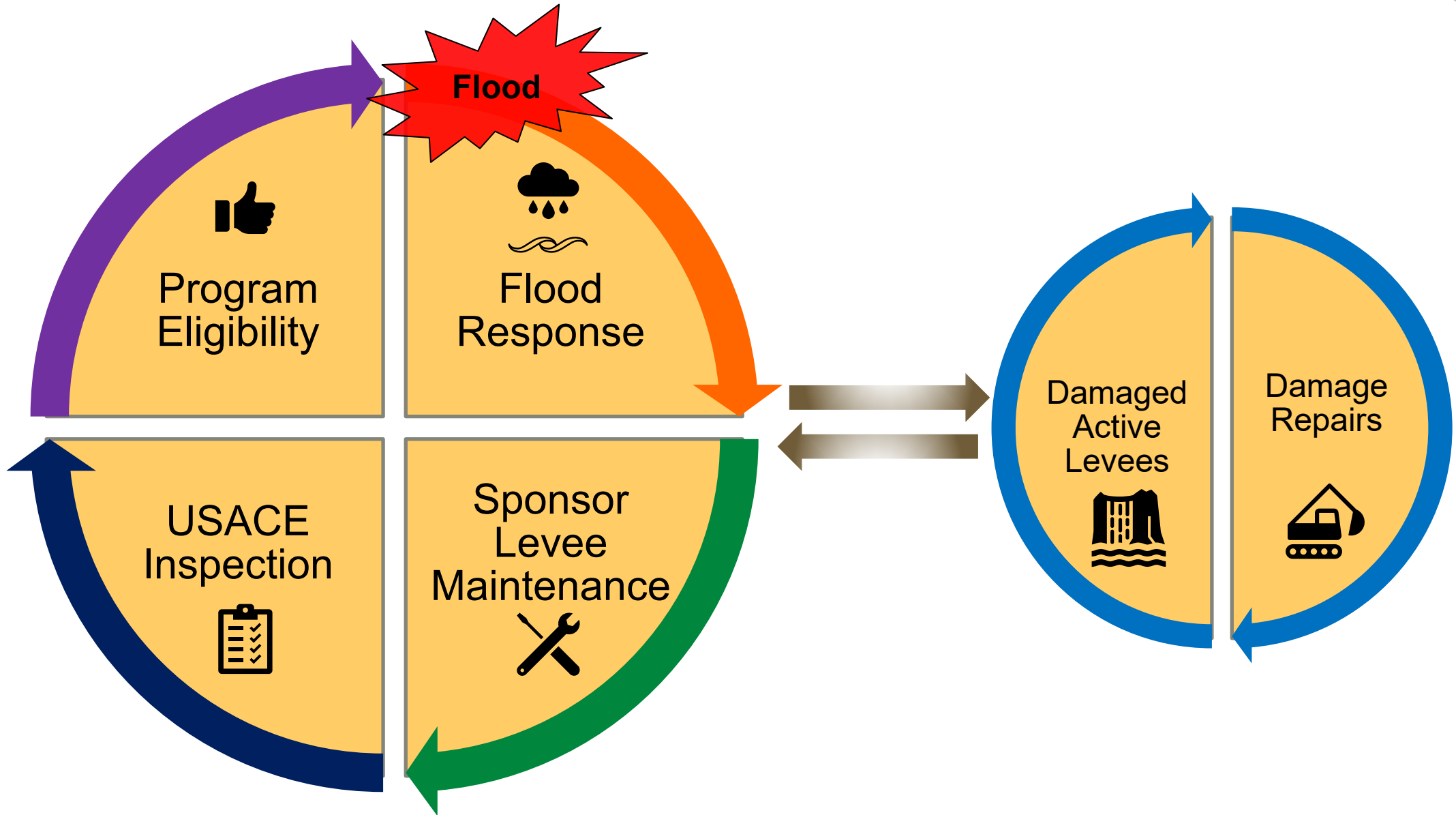
U.S. ARMY

# ST. LOUIS DISTRICT (MAP OF 7 FLOOD FIGHT ZONES)





# PUBLIC LAW (PL) 84-99 PROGRAM





# LEVEE INSPECTIONS



Levee Safety conducts the following types of inspections...

-Initial Eligibility Inspection (IEI): Conducted upon request from levee sponsors in order to obtain PL 84-99 eligibility. Purpose of IEIs is to establish the acceptable and minimum performance for non-federal Flood Control Works to gain active status in the Rehabilitation & Inspection Program (RIP).

-Continuing Eligibility Inspection (CEI): Conducted every two years after active status is obtained. Purpose of CEIs is to ensure levee eligibility standards are sustained.

Emergency Management considers a subset of the inspected items for PL 84-99 eligibility, often referred to as the **“18 Items”** determined to be the greatest risk.

## Levee Embankments

- Encroachments
- Closure Structures
- Slope Stability
- Erosion/Bank Caving
- Animal Control
- Culverts/Discharge Pipes
- Relief Wells/Toe Drainage Systems

## Interior Drainage System

- Culverts/Discharge Pipes
- Sluice/Slide Gates
- Flap Gates/Flap Valves/Pinch Valves

## Floodwalls

- Encroachments
- Closure Structures
- Tilting, Sliding, Settlement of Concrete Structures
- Foundation of Concrete Structures
- Relief Wells/Toe Drainage Systems

## Pump Stations

- Intake and Discharge Pipelines
- Sluice/Slide Gates
- Flap Gates/Flap Valves/Pinch Valves



# FLOOD RESPONSE AUTHORITY



- USACE flood fight response under PL 84-99 is 100% federally funded with possible exception of supplies and equipment.
- USACE emergency assistance is only to supplement Tribal, state, and local efforts and is temporary in nature.
- Assistance not authorized for:
  - Private residences and/or private developments
  - Businesses, including strictly agricultural property.





# FLOOD RESPONSE & ASSISTANCE



Flood Response – USACE can provide flood response assistance when the State requests USACE assistance and we activate our EOC at our Commander's direction.

- Local resources must be fully employed

Assistance (Technical & Direct) –

- **Technical Assistance:**

- Consists of providing review and recommendations (not direction) in support of state and local efforts, and helping determine feasible solutions to uncommon situations.

- The Corps does NOT direct evacuation of the areas protected by a flood control system.

- Corps has a Liaison Officer (LNO) at the State EOC to ensure timely information flow among the Corps, State, and local responders.





# USACE AUTHORITY – DIRECT ASSISTANCE



- **Direct Assistance:**

- May include, but is not limited to...

- Issuance of supplies

- Loan of equipment

- Contingency Contracting

- Rescue Operations

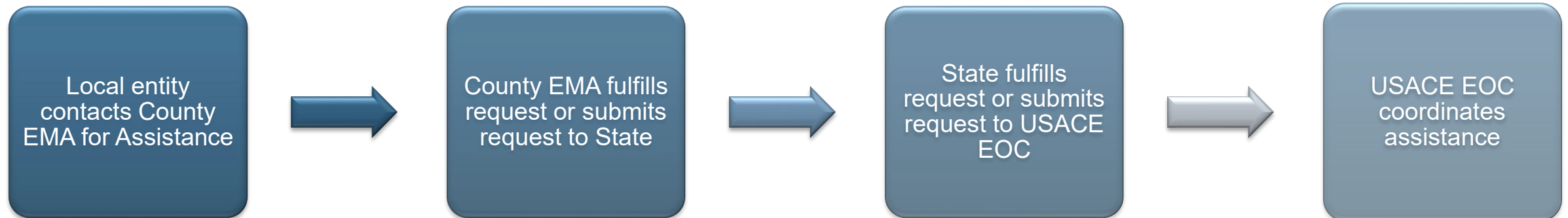
- Directing Flood Fight Operations



(Issuance of supplies and loan of equipment)...

- Request must not be able to be filled locally or by state

- Hand receipt required - signed by USACE and Sponsor / Levee District (borrower).



Note: USACE does NOT reimburse for flood fighting expenses, even if those costs are incurred based on actions that we recommend. Also, direct assistance under PL 84-99 is limited to flooding and coastal storm-related emergencies only.



# ***FLOOD FIGHTING MATERIALS/ SUPPLIES/ EQUIPMENT***



# SANDBAGS AND "PLASTIC"



- Sandbags are empty – NO sand provided
- Come in pallet crates
- Will need trailer for hauling



- Poly Sheeting
- 20-25 x 100 feet



# SANDBAG FILLING MACHINES



- The automatic sandbag machine (ASBM) comes with two Corps employees for training and machine maintenance
  - Machine does not tie bags
  - Borrower must have sand, equipment to fill machine, diesel fuel, and manpower to fill, stack, and transport filled bags



- The manual sandbag machine is also available



# OTHER AVAILABLE BARRIERS



## Large Sandbags

- Airlift capable
- Wire rope slings for airlift drop

**\*24–48-hour lead time\***



## Fabric-lined gabion basket

- Often referred as “Hescos” or “Hesco Barriers”
- 4’ Storm Line (1 unit = 15 LF)
- Gabion basket removal bar – after – for reuse of baskets
- Other flood barriers are being tested by USACE for use in the future.



# CRISAFULLI PUMPS



- 8" and 12"
- PTO powered (require external power)
- Must be hauled on borrowers' trailer (tires are not road-ready)
- Diesel pumps can be requested but have a **24–48-hour lead time**

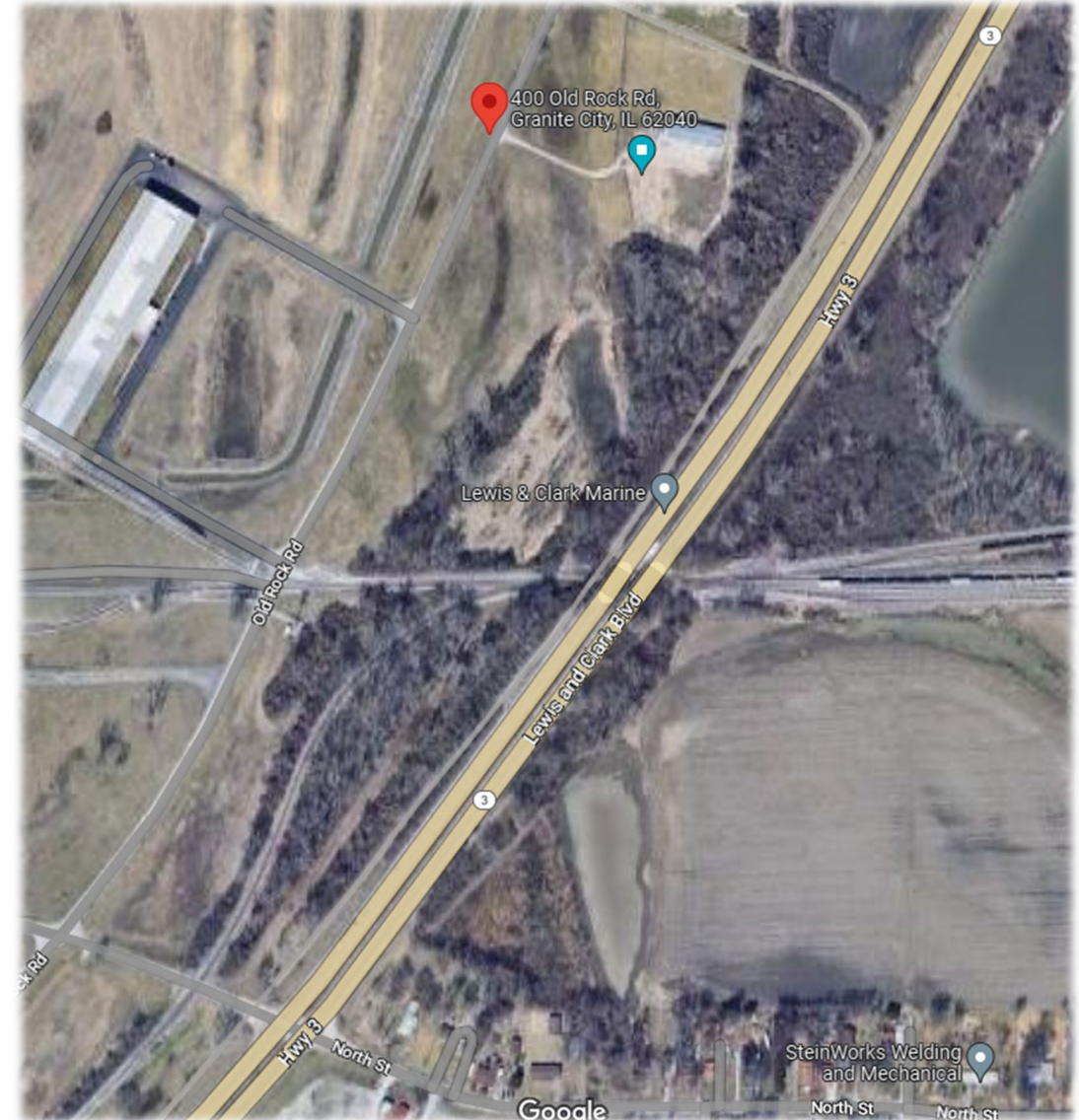
8in Pump	12in Pump
Regular Lift - Pump Curve 2550 GPM, 25 HP	Regular Lift - Pump Curve 4600 GPM, 35 HP
Intermediate Lift - Pump Curve 3600 GPM, 50 HP	Intermediate Lift - Pump Curve 6500 GPM, 100 HP
High Lift - Pump Curve 4000 GPM, 65 HP	High Lift - Pump Curve 7000 GPM, 125 HP



# PICKUP & RETURN

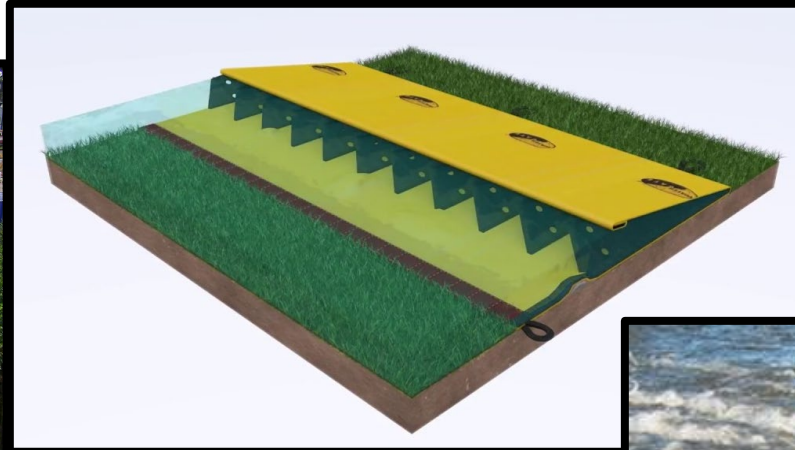


- Warehouse at 400 Old Rock Road, Granite City, IL
- No delivery (except automatic sandbagger)
  - Pick up at warehouse – need to arrange time (call EOC at 314-331-8605)
- Return to warehouse within 60 days from close of event
  - Same condition as when borrowed
  - Borrower must repair damages





# LIMITLESS OPTIONS FOR PRIVATE PURCHASE



Approved



\*\*USACE does not endorse any specific products or brands



# EXCESS AVAILABLE



## Contact

**Brian Pirtle**  
**314-331-8570**

or

**Jennifer Moehlmann**  
**314-331-8567**



# ***FLOOD RECOVERY***



# FLOOD RECOVERY



## PL 84-99 Rehabilitation Activities

- Authorized to assist with repair of eligible federal and non-federal levees damaged by flooding that are active in P.L. 84-99.
  - Certain conditions must be met, and funds must be available.
- Approved flood repairs are completed by USACE contractors to USACE standards.
- Non-federal Sponsors pay 80/20 cost share through cash or work in kind (or combination).
- Federal levees are repaired at 100% federal cost, except for borrow materials and real estate



# DAMAGES ELIGIBLE FOR REPAIR

- Breaches
  - Including intentional breaches IF coordinated in advance with USACE EOC
- Slides
- Wave Wash
- Culvert Damage
- Gate Damage
- Pump Station Damage
- Some Underseepage Damages





# INELIGIBLE DAMAGES

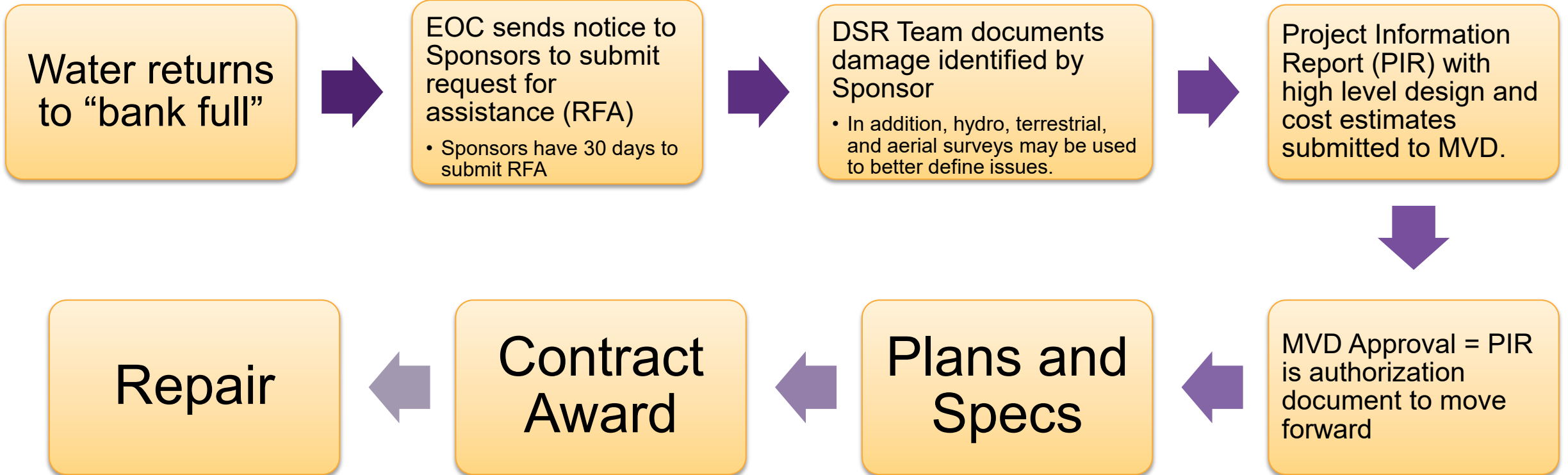


- We do not address the following (other agencies may have programs that can assist, e.g., USDA, NRCS, FEMA)
  - Debris Removal
  - Removal of Flood Fight Materials
  - Intentional Breach Repair if Not Pre-Coordinated with EOC





# POST FLOOD PROCESS





# PL 84-99 REPAIRS



## What you can do to help speed up repair process:

- Identify potential borrow areas now.
- Get landowners and attorney involved as early as possible.
  - We don't need the paperwork, just certification you've acquired lands, easements, and rights of way.
- Return Cooperation Agreement to Project Manager (PM) ASAP.
- Notify Project Manager of potential problems providing lands and easements.
- Return Real Estate documentation (Authorization for Entry and Attorney Certification) to MVS ASAP.



# PL 84-99 PROJECT MANAGER



Brandon Schneider PL 84-99 Project Manager

314-331-8368

[brandon.m.schneider@usace.army.mil](mailto:brandon.m.schneider@usace.army.mil)





# THANK YOU

